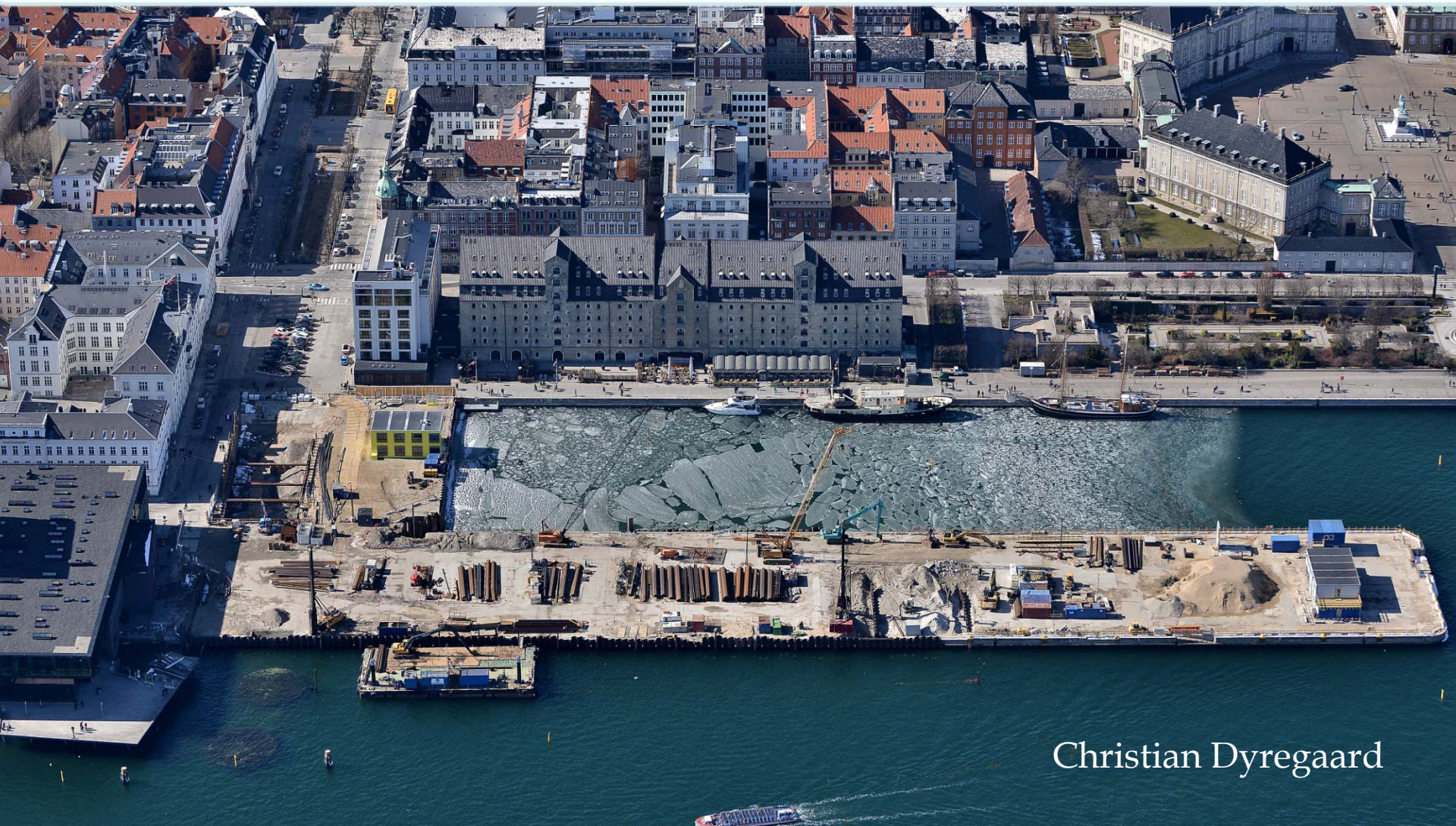


Kvæsthusprojektet



- Byggegrube til parkeringsanlæg på Kvæsthusmolen

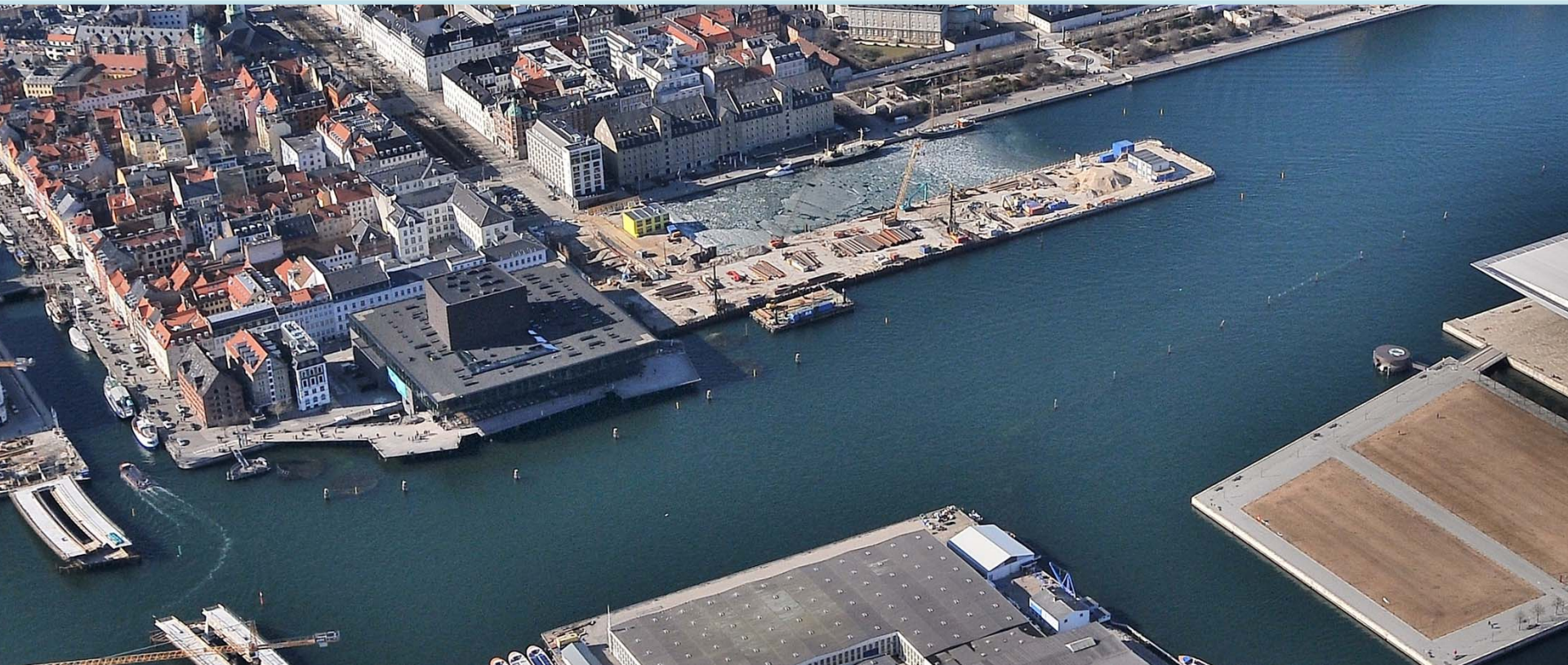


Christian Dyregaard

Kvæsthusprojektet



- Byggegruben
- Konstruktioner
- Materialer, stål
- Udførelse, maskiner
- Udfordringer



- Byggegruben, kælder og rampedel



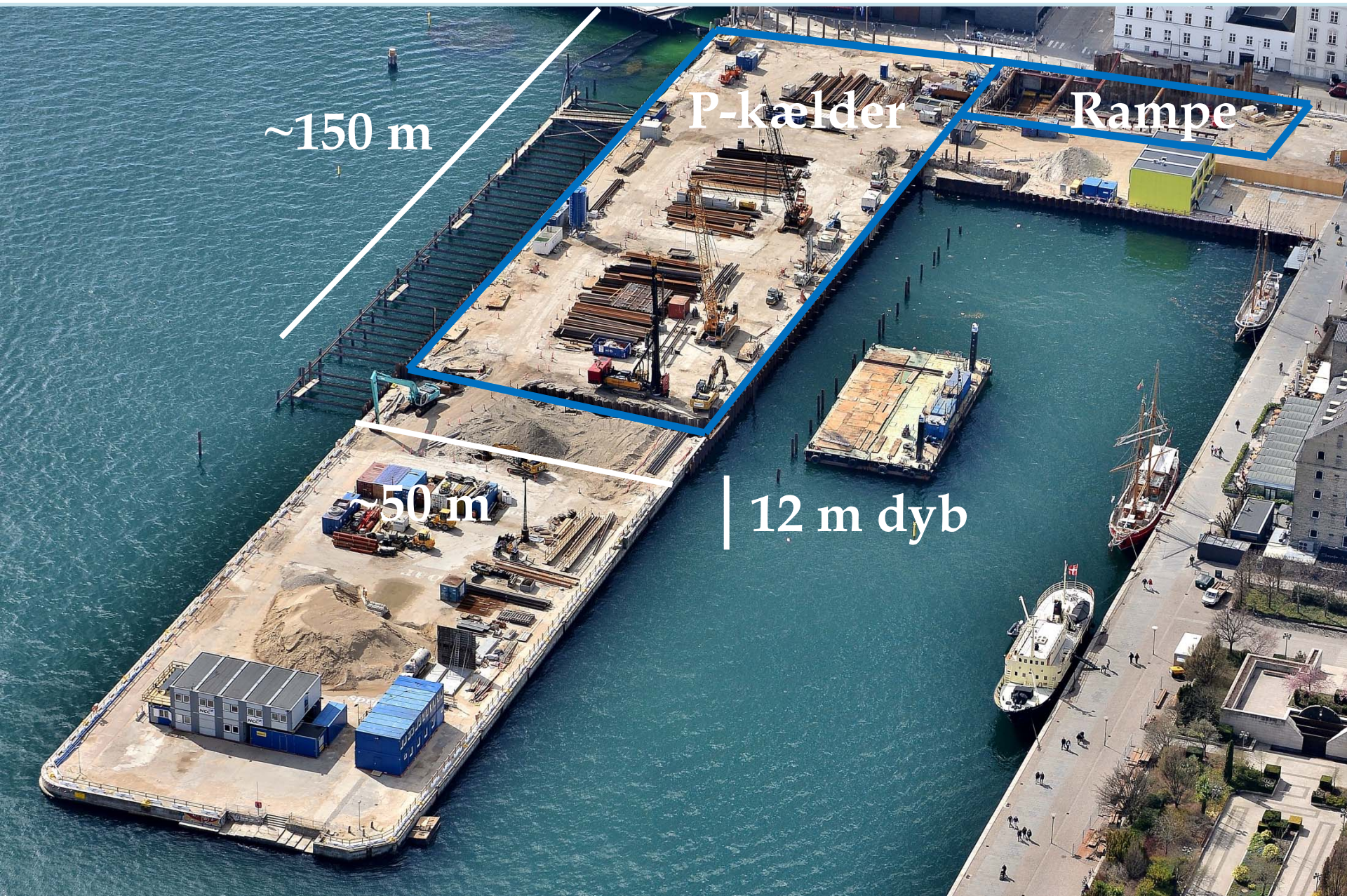
~150 m

P-kælder

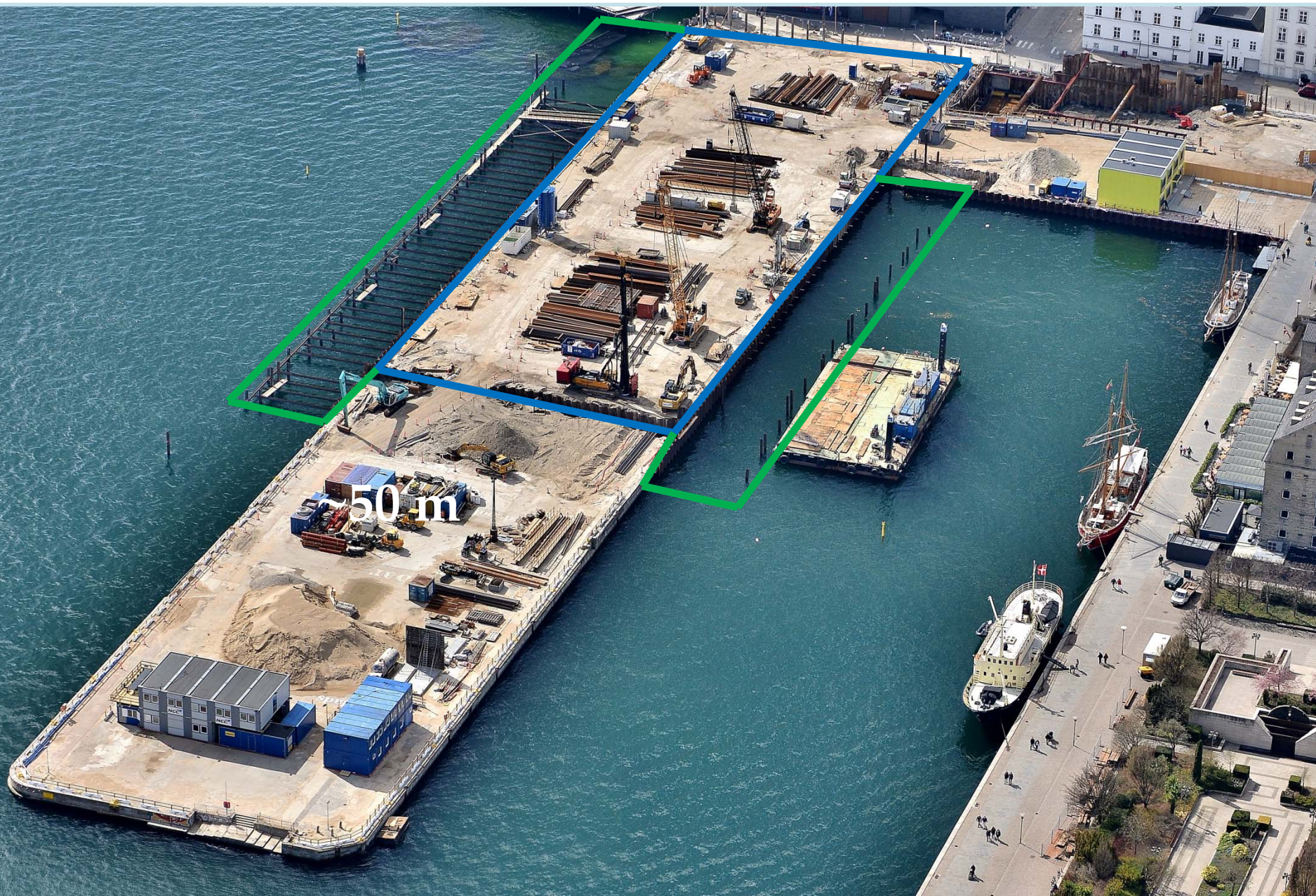
Rampe

50 m

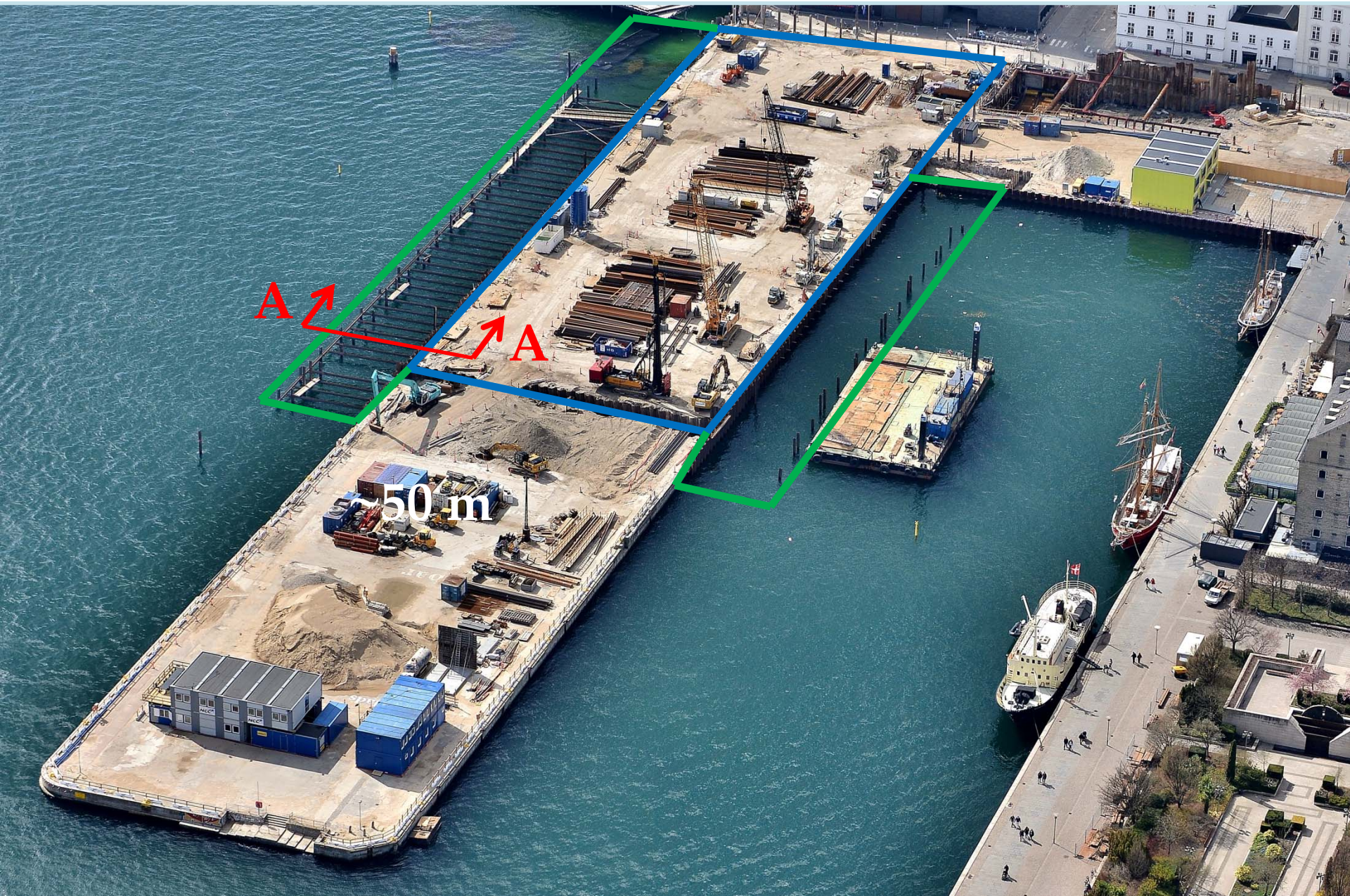
| 12 m dyb



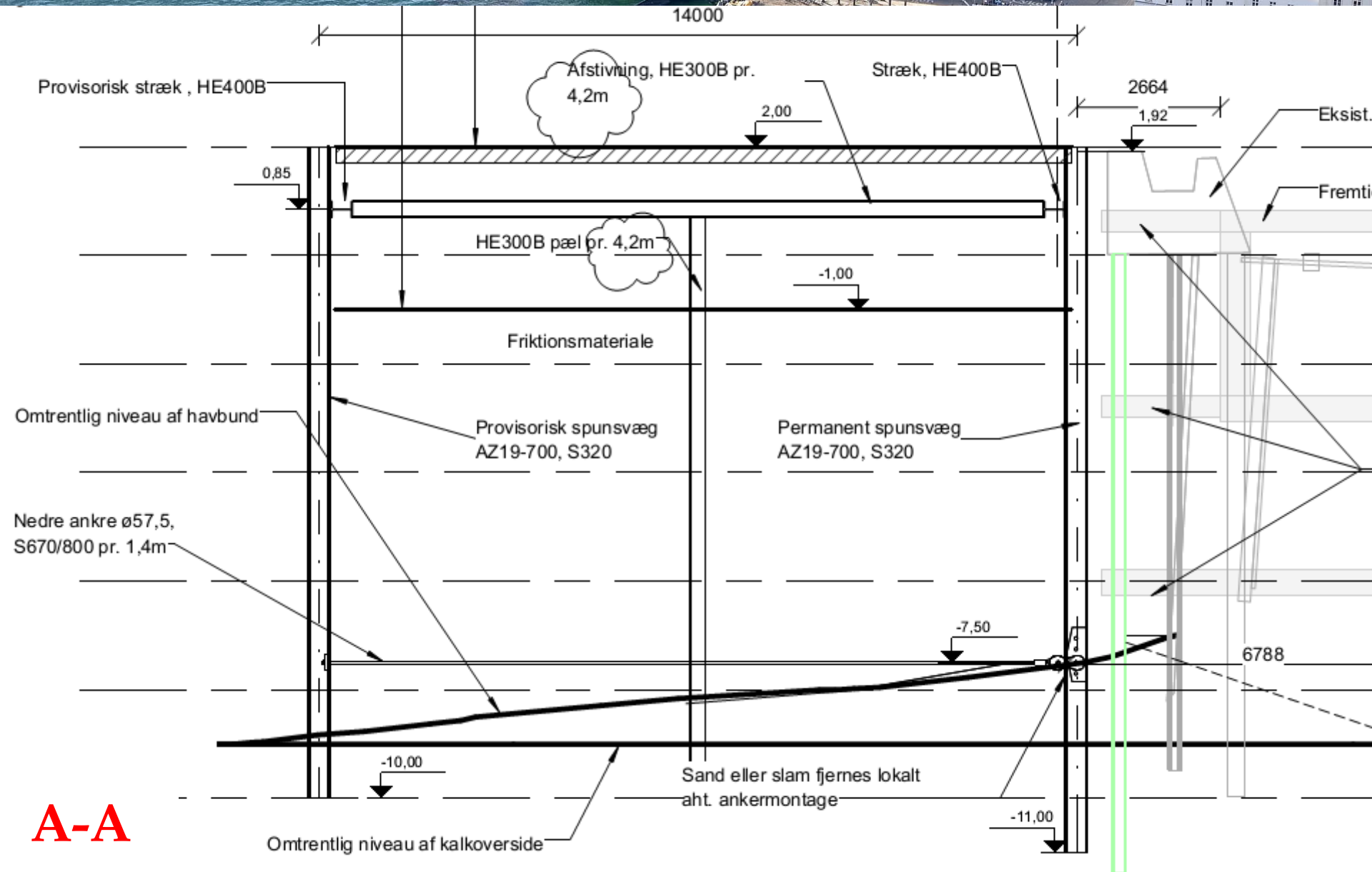
- Byggegruben, fangedæmninger



- Konstruktioner, fangedæmning

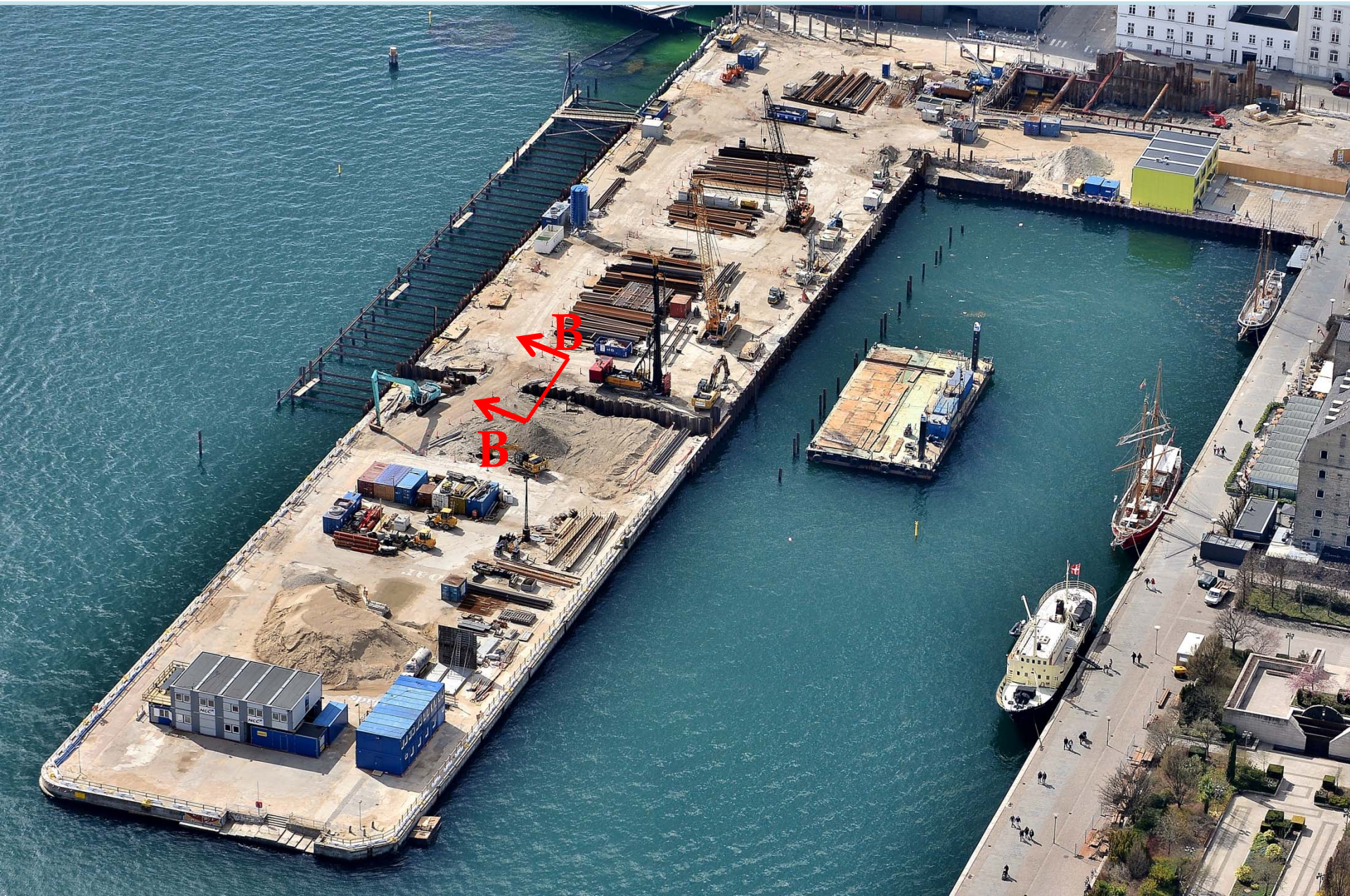


- Konstruktioner, fangedæmning

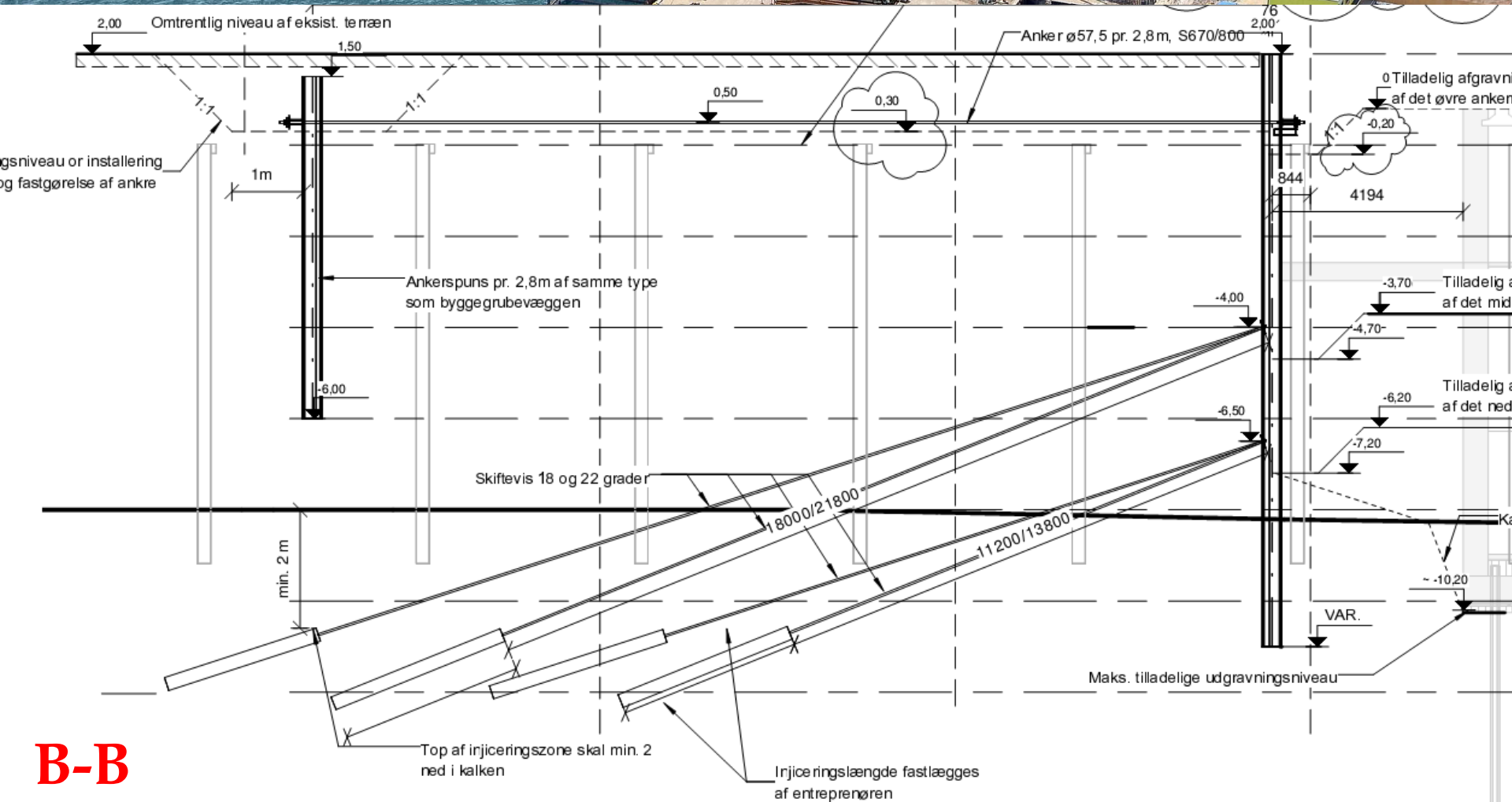
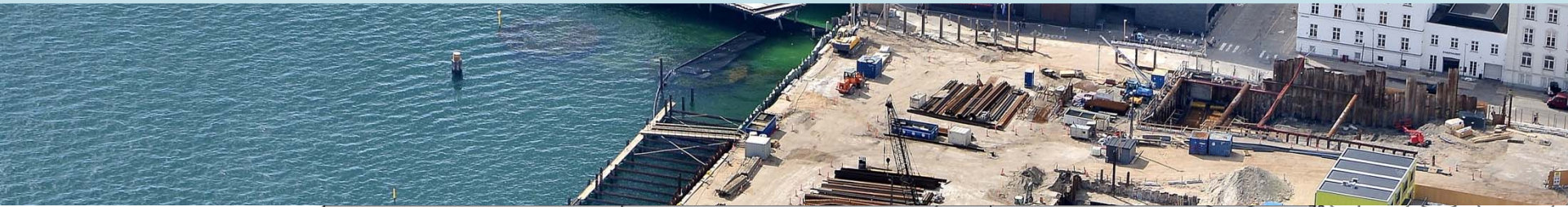


A-A

- Konstruktioner, traditionel spunsvæg med forankring



- Konstruktioner, traditionel spunsvæg med forankring



B-B

- Materialer, stål



Spuns (1400 ton – længder 7-15 meter):

AZ19-700

AZ20-700

Larssen L720

Bjælker (650 ton):

HEB240-550

UNP300-400

Ankre (250 stk.):

SAS 57,5 S670/800

(længde 10-15 meter)



- Udførelse, maskiner til nedbringning af spuns



Liebherr LR1100
PVE 40 VM

Hitachi CX550
ICE RF20

CAT330
ICE RF11

Junttan PM20
PVE40 VM



- Udfordringer



- Varierende kalkoverflade
- Rammehindringer
- Naboer - støj



- Spørgsmål

A low-angle, upward-looking photograph of several large tower cranes against a cloudy sky. The cranes are made of yellow and grey metal lattice. The perspective is from the base of the cranes, looking up towards the top of the frame.

Spørgsmål?